



*Road Safety Professional (RSP)
Certification Update*

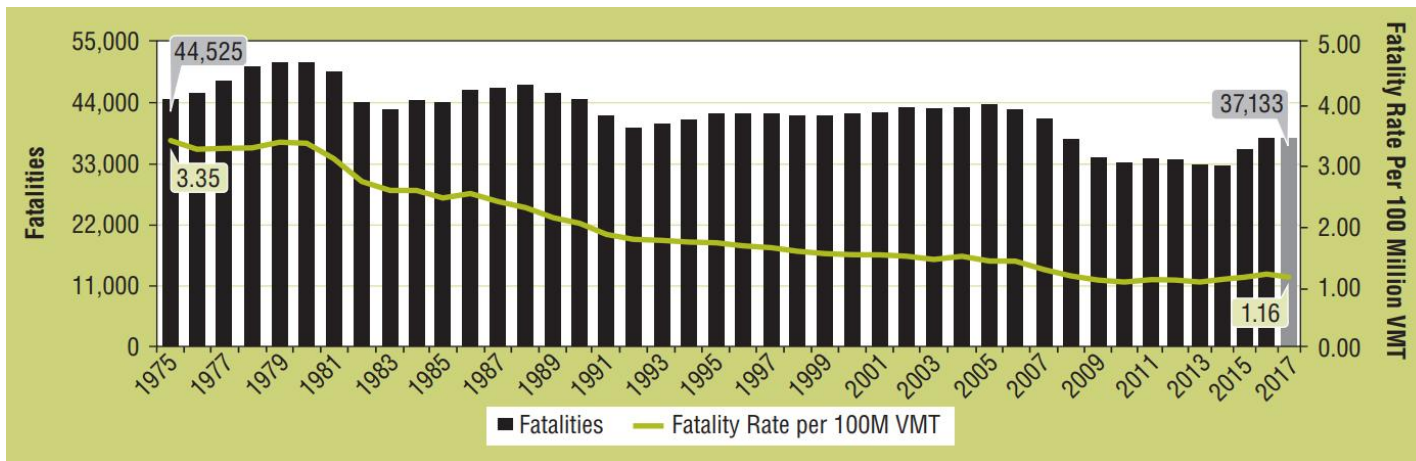
AZITE Summer Series - Safety

July 24, 2019



History

- Why? 40,000 road fatalities every year in US
- Administered by TPCB (same as PTOE, PTP)
- Goals:
 - Recognize road safety as a profession
 - Establish a recognized level of practice and knowledge
 - Incentivize safety education





Certification Levels – RSP 1

- Proficiency in the foundations of road safety principles
- Audience - professionals who make decisions/take actions that potentially impact the safety of the traveling public: behavioral, law enforcement, emergency response, public health, Engineering communities
- Exam
 - Computer-based
 - 3 hours
 - 75 qualitative questions (multiple choice)
 - Domain Areas:
 - Foundations of Road Safety
 - Human Behavior and Road Safety Problems
 - Implementing Road Safety Programs
 - Measuring Safety
 - Solving Safety



Certification Levels – RSP 1

- Qualifications for exam
 - Bachelors degree + 2 yrs experience in transportation safety, OR
 - 4 yrs experience in transportation safety
- Exam Administration
 - 3 testing windows per year – February, June, October
 - August 6 is deadline to apply for October Exam
 - First administration → October 2018
- Fees
 - \$100 Application + Exam
 - \$180 Three year certification



Certification Levels – RSP 1

- Study materials
 - Webinars
 - Reference list
 - Practice Test
- 244 RSP1 Certificate holders worldwide. In Arizona:

Mike Blankenship

Luana Broshears

Darlene Danehy

Spencer Keane

Yung Koprowski

Chris Milner

Sanjay Paul

Alejandro Angel



Certification Levels – RSP 1

- Sample Questions

Which of the following definitions best describes “Nominal Safety”?

- The historical and long-term objective safety of a location based on crash data
- A measure of safety (e.g., crash frequency) that is not adjusted for long-term growth in traffic volumes
- An absolute statement about the safety of a location based only on its adherence to a set of design standards
- A subjective description of a location’s safety based on public opinion surveys

Which of the following is not a key performance measure associated with ensuring high-quality safety data?

- Timeliness
- Completeness
- Integration
- Data file size



Certification Levels – RSP 2

- Deeper level of proficiency / understanding of road safety science
- Audience - professionals responsible for behavioral or engineering safety programs
- Exam
 - Computer-based
 - 3 hours
 - 75 quantitative & qualitative questions (multiple choice)
 - Two specialty options (modules):
 - Behavioral
 - Infrastructure

Infrastructure Domains

Road Safety Management

Acquiring and Using Safety Data

Crash Prediction and Trend Interpretation

Target Crashes and Countermeasures

Multimodal Transportation Safety

Addressing Safety Problems with Policy

Safe Systems



Certification Levels – RSP 2

- Qualifications for exam
 - RSP1 Certification
 - Bachelors degree + 5 yrs experience in transportation safety, OR
 - 10 yrs experience in transportation safety
- Exam Administration
 - 3 testing windows per year – February, June, October
 - August 6 is deadline to apply for October Exam
 - First administration → October 2019
- Fees
 - \$100 Application + Exam
 - \$135 for three year certification (in addition to RSP1)



Road Safety Professional Certification

Questions?

For More Information go to
<https://www.tpcb.org/certification/rsp/>